

# Taxonomic Review of *Cotingacola* (Phthiraptera: Philopteridae) from the Cotingas (Passeriformes: Tyrannidae), with Descriptions of Two New Species

DALE H. CLAYTON AND ROGER D. PRICE<sup>1</sup>

Department of Biology, University of Utah, Salt Lake City, UT 84112

J. Med. Entomol. 35(5): 732-739 (1998)

**ABSTRACT** The genus *Cotingacola* currently contains 14 species and subspecies described by Carriker. A careful examination of these reveals only 6 valid taxa with 8 names placed as junior synonyms. These new synonymies are *Cotingacola rupicolae colombiana*, *C. latigastra*, *C. temporalis* and *C. longicrucis*, synonyms of *C. rupicolae*; *C. foramina*, *C. graciligastra* and *C. tityra*, synonyms of *C. tergalis*; *C. acuticeps*, a synonym of *C. dimorpha*. Two new species are described from Peruvian material: *C. stotzi* (type host: *Querula purpurata*) and *C. fitzpatricki* (type host: *Lipaugus subalaris*). A key is provided for identification of the 8 species.

**KEY WORDS** Ischnocera, *Cotingacola*, Tyrannidae, Cotinginae, cotingas, host specificity

AT PRESENT, 14 species and subspecies of the ischnoceran chewing louse genus *Cotingacola* Carriker are recognized, of which 12 are recorded from cotingas in the neotropical subfamily Cotinginae (Passeriformes: Tyrannidae) and 1 each is recorded (erroneously—see below) from the subfamilies Tyranninae and Tityrinae (Tyrannidae). The genus and 13 species and subspecies were originally described by Carriker (1956) who subsequently described a 14th species (Carriker 1963).

Collection of *Cotingacola* specimens from 3 host species in Peru (Clayton et al. 1992) served as the stimulus for this article. In our attempt to identify these lice, it became necessary to review all of the taxa in the genus as Carriker's descriptions were too imprecise to be of value. For precautionary remarks about the use of Carriker descriptions and material, see Price and Clayton (1993).

All measurements are in millimeters. Abbreviations for measured structures are explained the 1st time they are used. Host classification to species follows Sibley and Monroe (1990), and that of subspecies follows Peters (1979). Characters given in the key hold for both sexes unless otherwise stated. Holotypes of the new species will be deposited in The Field Museum (Chicago), and paratypes, as numbers allow, will be in the collections of that museum and those of the University of Minnesota (St. Paul) and Oklahoma State University (Stillwater).

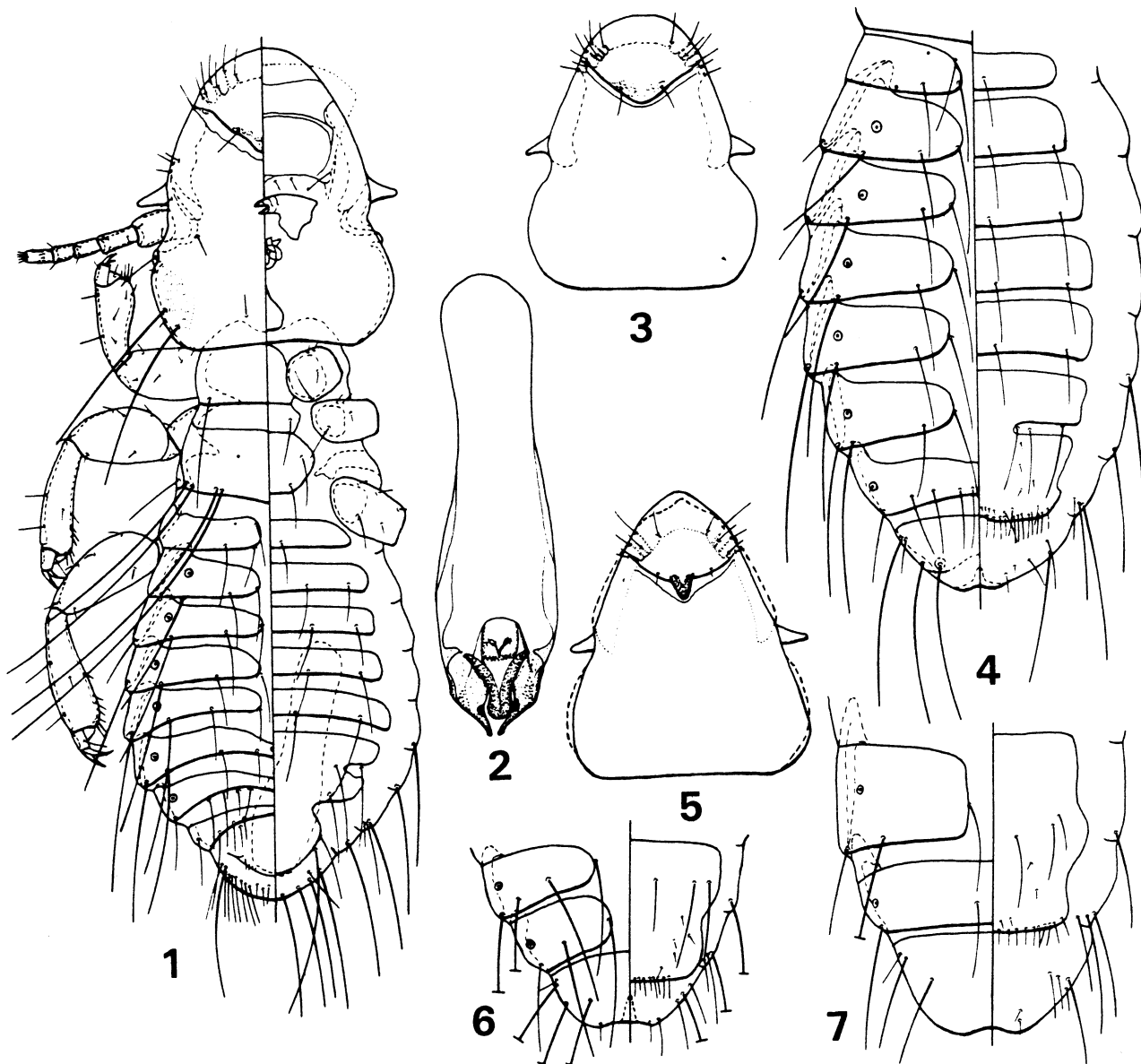
## *Cotingacola* Carriker

*Cotingacola* Carriker, 1956: 366. Type species: *Cotingacola rupicolae* Carriker, 1956.

Typical individuals in this genus are characterized as follows: Both sexes with head and thoracic chaetotaxy much as in Fig. 1, with head rounded to tapered anteriorly, marginal carina uninterrupted, distinct medioanterior dorsal plate rounded posteriorly, conic conspicuous, and antennae similar. Abdomen (Fig. 4) with tergites on segments II (1st apparent segment)–VII distinctly separated medially, each side with 3 setae on line with to mediad of spiracle, tergite VIII not divided medially and sternal plates weakly developed with II having 2 setae, III–VI each with 4 setae. Female with single row of fine marginal setae on subgenital plate (Fig. 4). Male with genitalia (Fig. 2) having broad basal apodeme, short inwardly directed parameres, and variable medioposterior structures. There is little sexual dimorphism except that associated with the dimensions, terminalia, and genitalia. For brevity, these features will not be repeated in species descriptions except for cases in which they differ from the above description.

*Cotingacola* has uncertain affinities with a number of relatively similar genera occurring on other avian orders and families. *Cotingacola* members are recognized by their anteriorly rounded head with a complete marginal carina in conjunction with their occurrence on cotinga hosts. The only other philopterid lice presently recognized from cotinga hosts are 5 species of *Pseudocophorus* Carriker and 2 species of *Philopterus* Nitzsch. These genera are quite different morphologically from *Cotingacola*.

<sup>1</sup> 4622 Kinkead Avenue, Fort Smith, AR 72903.



Figs. 1-7. *C. rupicolae*. (1) Male; (2) male genitalia; (3) female head outline; (4) female abdomen. *C. parmipapillae*. (5) Female head outline (solid line for distorted type specimen; dashed line for specimen ex *Cephalopterus ornatus*); (6) female terminalia. *C. tergalis*. (7) Female terminalia.

*Cotingacola rupicolae* Carriker  
(Figs. 1-4)

*Cotingacola rupicolae rupicolae* Carriker, 1956: 367.  
Type host: *Rupicola peruviana saturata* Cabanis and Heine.

*Cotingacola rupicolae colombiana* Carriker, 1956: 369.  
Type host: *Rupicola peruviana aequatorialis* Taczanowski. New synonymy.

*Cotingacola latigastra* Carriker, 1956: 369. Type host:  
*Cotinga nattererii* (Boissonneau). New synonymy.

*Cotingacola temporalis* Carriker, 1956: 370. Type host:  
*Pipreola riefferii riefferii* (Boissonneau). New synonymy.

*Cotingacola longicrucis* Carriker, 1956: 371. Type host:  
*Rhytipterna simplex fredrici* (Bangs and Penard)-  
error. New synonymy.

**Male and Female.** Head (Figs. 1 and 3) evenly rounded anteriorly, head length (HL)/temple width (TW), 1.12-1.30. Abdomen relatively broad, total length (TL)/abdomen width at segment V (AWV), 2.64-3.13. Male as in Fig. 1, tergite on VII narrowed medially but not clearly divided, last tergite with row of medium setae on each side, genitalia (Fig. 2) with small fragile V-shaped penis and other structures as shown. Female larger than male with abdomen as in Fig. 4, subgenital plate with 25-35 marginal setae.

**Dimensions of Male.** Preocular width (POW), 0.33-0.39; TW, 0.40-0.46; HL, 0.51-0.56; dorsoanterior plate length (DPL), 0.16-0.19; prothorax width (PW),

0.26–0.32; metathorax width (MW), 0.37–0.42; AWV, 0.51–0.58; TL, 1.41–1.64; genitalia width (GW), 0.12–0.13; genitalia length (GL), 0.42–0.52.

*Dimensions of Female.* POW, 0.38–0.42; TW, 0.48–0.52; HL, 0.56–0.60; DPL, 0.18–0.20; PW, 0.30–0.34; MW, 0.40–0.45; AWV, 0.61–0.67; TL, 1.81–1.97.

*Material.* HOLOTYPE: ♂, ALLOTYPE: ♀, 3 ♂, 1 ♀ PARATYPES of *Cotingacola rupicolae* ex *Rupicola peruviana saturata*, BOLIVIA; 4 ♂♂, 1 ♀ ex *R. p. saturata*, PERU; 3 ♂♂, 2 ♀♀ ex *R. peruviana* (Latham), PERU; 2 ♂♂, 1 ♀ ex *R. peruviana*, ECUADOR. HOLOTYPE: ♂, ALLOTYPE: ♀, 4 ♂, 3 ♀ PARATYPES of *C. rupicolae colombiana* ex *R. p. aequatorialis*, COLOMBIA; 6 ♂♂, 14 ♀♀ ex *R. p. aequatorialis*, COLOMBIA. HOLOTYPE: ♀ of *C. latigastra* ex *Cotinga nattererii*, COLOMBIA. HOLOTYPE: ♂, ALLOTYPE: ♀, 4 ♂ PARATYPES of *C. temporalis* ex *Pipreola r. riefferii*, COLOMBIA. HOLOTYPE: ♂ of *C. longicrucis* ex *Rhytipterna simplex fredrici*-error, BOLIVIA.

*Discussion.* A study of the type material, including the holotypes, allotypes, and many paratypes of the 5 Carriker names associated with this species, has convinced us that they are indistinguishable. Two of the Carriker (1956) species, including *C. longicrucis* synonymized above, were based on material supposedly from tyrannid subfamilies other than Cotinginae. Each of these species is associated with but a single louse specimen. It is most likely that these are cases of contamination or straggling as each is a synonym of a previously described species from the Cotinginae. The genus *Cotingacola* should no longer be considered parasites of members of non-Cotinginae hosts.

This species is readily separated from others of the genus by the head shape (Figs. 1 and 3), the unique male genitalia (Fig. 2), and dimensional differences.

#### *Cotingacola parmipapillae* Carriker (Figs. 5 and 6)

*Cotingacola parmipapillae* Carriker, 1956: 372. Type host: *Pyroderus scutatus scutatus* (Shaw).

*Female.* Head (Fig. 5) with conspicuous medioposterior projection of dorsal head plate. Solid line of Fig. 5 indicating head shape of Carriker type material for species, this likely due to distortion from poor specimen preparation and slide mounting; dashed line giving more likely normal shape of head, with slight medioanterior protuberance. HL/TW, 1.14–1.17. Abdominal sternites III–VI each with at least 6 setae. Abdomen with TL/AWV, 3.19–3.27. Terminalia (Fig. 6) with tergite VIII distinctly divided medially, subgenital plate with 15–16 marginal setae. Male unknown.

*Dimensions of Female.* POW, 0.40–0.43; TW, 0.51–0.52; HL, 0.58–0.61; DPL, 0.21–0.23; PW, 0.28–0.32; MW, 0.35–0.43; AWV, 0.54–0.56; TL, 1.70–1.88.

*Material.* HOLOTYPE: ♀, 1 ♀ PARATYPE of *Cotingacola parmipapillae* ex *Pyroderus s. scutatus*, BRAZIL. 7 ♀♀ ex *Cephalopterus ornatus* Geoffroy Saint-Hilaire, BOLIVIA.

*Discussion.* This species is easily distinguished from all others of the genus by the unusual head shape, the shape of the dorsal head plate (Fig. 5), the large number of setae on abdominal sternites, and the medial division of tergite VIII (Fig. 6). Even though the male is unknown, it likely shares most, if not all, of these features and should be equally well separated.

Although Carriker (1956) did not include a female paratype, we found a 2nd female on the type slide and presume it to be paratype material that he overlooked.

The series of 7 females of this species originally labelled by Carriker as "*Cotingacola gracilis* Carr. paratypes" was confusing because Carriker (1956) made no mention of any females in his description of *C. gracilis*. These 7 females are unique and quite different from *C. gracilis*, something that Carriker may have subsequently realized but, for some reason, did not choose to correct on the slide labels. The 2 females of the type series for *C. parmipapillae* are poorly prepared and mounted, suffering from gross distortion and obstruction by internal material. The poor quality of these specimens makes the true nature of the anterior head margin and general head shape questionable, as we discussed above in reference to Fig. 5. None of the other features for these 7 females differ from those of *C. parmipapillae*. Therefore, these specimens are best considered members of *C. parmipapillae*.

#### *Cotingacola tergalis* Carriker (Figs. 7–10)

*Cotingacola tergalis* Carriker, 1956: 373. Type host: *Pipreola aureopectus aureopectus* (Lafresnaye).

*Cotingacola foramina* Carriker, 1956: 375. Type host: *Pipreola intermedia signata* (Hellmayr). New synonymy.

*Cotingacola graciligastra* Carriker, 1956: 377. Type host: *Pipreola arcuata arcuata* (Lafresnaye). New synonymy.

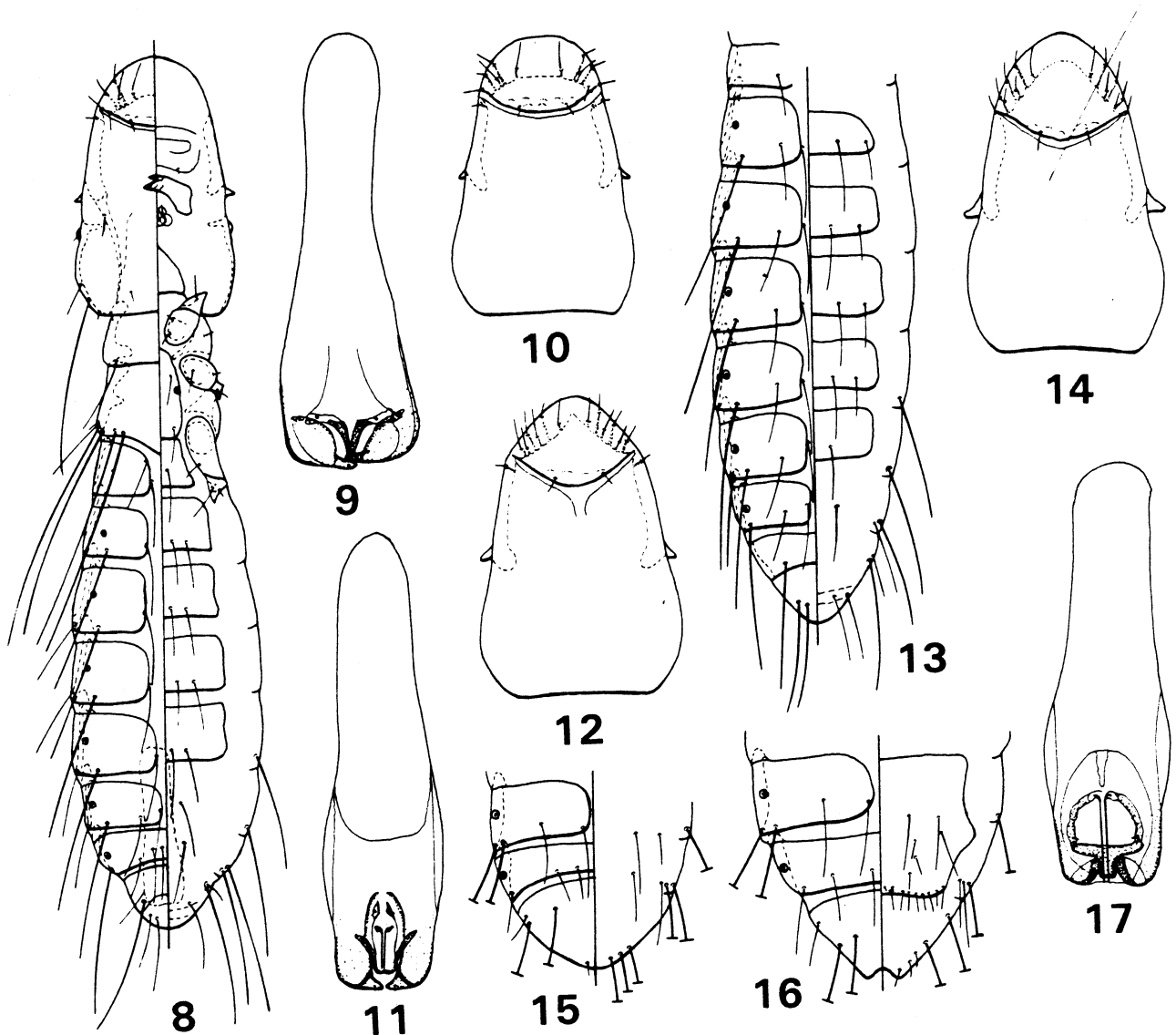
*Cotingacola tityra* Carriker, 1956: 379. Type host: *Tityra inquisitor buckleyi* Salvin and Godman-error. New synonymy.

*Male and Female.* Head (Figs. 8 and 10) evenly rounded anteriorly; HL/TW, 1.33–1.52, conical small and inconspicuous. Abdomen relatively narrow; TL/AWV, 4.12–5.06; with only 2 setae medially of spiracle on each of tergites III–VI. Male as in Fig. 8; genitalia (Fig. 9) with prominent V-shaped penis, 0.020–0.025 long. Female with terminalia as in Fig. 7, subgenital plate with 18–23 marginal setae.

*Dimensions of Male.* POW, 0.23–0.28; TW, 0.28–0.32; HL, 0.42–0.45; DPL, 0.11–0.12; PW, 0.19–0.21; MW, 0.22–0.25; AWV, 0.31–0.35; TL, 1.47–1.57; GW, 0.07; GL, 0.27–0.29.

*Dimensions of Female.* POW, 0.27–0.30; TW, 0.31–0.34; HL, 0.44–0.47; DPL, 0.11–0.13; PW, 0.20–0.23; MW, 0.24–0.28; AWV, 0.35–0.41; TL, 1.69–1.86.

*Material.* HOLOTYPE: ♂, ALLOTYPE: ♀, 1 ♂, 1 ♀ PARATYPES of *Cotingacola tergalis* ex *Pipreola a. au-*



Figs. 8-17. *C. tergalis*. (8) Male; (9) male genitalia; (10) female head outline. *C. gracilis*. (11) Male genitalia; (12) male head outline; (13) male abdomen. *C. dimorpha*. (14) Female head outline; (15) male terminalia; (16) female terminalia; (17) male genitalia.

*repectus*, COLOMBIA. HOLOTYPE: ♂, ALLOTYPE: ♀ of *C. foramina* ex *Pipreola intermedia signata*, BOLIVIA. HOLOTYPE: ♂ of *C. graciligastra* ex *Pipreola a. arcuata*, VENEZUELA. HOLOTYPE: ♀ of *C. tityra* ex *Tityra inquisitor buckleyi*-error, COLOMBIA.

**Discussion.** A study of the type specimens, including the holotypes, allotypes, and paratypes of the 4 Carriker names associated with this species, has convinced us that the specimens are indistinguishable. *C. tityra* represents a Carriker (1956) species based on material supposedly from the tyrannid subfamily Tityrinae. It is obvious, as in the above similar case, that this is most likely a case of contamination or straggling and that the genus *Cotingacola* no longer should be considered parasites of members of non-Cotinginae hosts.

Carriker (1956) based his description of *C. tergalis* only on the holotype and allotype, but we found an additional male and female paratype in his collection.

This species is readily separated from others of the genus by the head shape and the small conii (Figs. 8 and 10), the reduced chaetotaxy of the abdominal tergites (Fig. 8), the unique male genitalia (Fig. 9), and the small dimensions.

*Cotingacola gracilis* Carriker  
(Figs. 11-13)

*Cotingacola gracilis* Carriker, 1956: 376. Type host: *Cephalopterus ornatus* Geoffroy Saint-Hilaire.

**Male.** Head as in Fig. 12; HL/TW, 1.42-1.44, conii very small, abdomen (Fig. 13) narrow, TL/AWV, 4.57-5.00. Genitalia (Fig. 11) with slender parallel-sided penis, 0.035 long, and other structures as shown. Female unknown.

**Dimensions of Male.** POW, 0.34-0.35; TW, 0.38-0.39; HL, 0.54-0.56; DPL, 0.17-0.18; PW, 0.23-0.26;

MW, 0.30–0.32; AWV, 0.36–0.37; TL, 1.69–1.80; GW, 0.09; GL, 0.32–0.35.

**Material.** HOLOTYPE: ♂, 1 ♂ PARATYPE of *Cotingacola gracilis* ex *Cephalopterus ornatus*, BOLIVIA.

**Discussion.** The slender abdomen of this species is similar to 2 other species of *Cotingacola*: *C. tergalis*, described above, and *C. dimorpha* Carriker, described below. It is separated from *C. tergalis* by differences in abdominal chaetotaxy, markedly different genitalia structure (Fig. 11 versus Fig. 9), and larger dimensions. It is separated from *C. dimorpha* by its larger head dimensions and shorter penis (Fig. 11 versus Fig. 17).

#### *Cotingacola dimorpha* Carriker

(Figs. 14–17)

*Cotingacola dimorpha* Carriker, 1956: 376. Type host: *Procnias tricarunculata* (J. and E. Verreaux).

*Cotingacola acuticeps* Carriker, 1956: 378. Type host: *Pipreola aureopectus aureopectus* (Lafresnaye)–probable error. New synonymy.

**Male and Female.** Head as in Fig. 14; HL/TW, 1.41–1.56. Abdomen relatively narrow; TL/AWV, 4.00–4.46. Male terminalia as in Fig. 15, genitalia (Fig. 17) with narrow parallel-sided penis, 0.07 long, and other structures as shown; parameres may be flexed anteriorly in specimen illustrated. Female terminalia as in Fig. 16, subgenital plate with 15–17 marginal setae.

**Dimensions of Male.** POW, 0.26–0.28; TW, 0.32–0.33; HL, 0.50; DPL, 0.17–0.18; PW, 0.21–0.22; MW, 0.28–0.31; AWV, 0.35–0.36; TL, 1.56–1.57; GW, 0.09; GL, 0.36.

**Dimensions of Female.** POW, 0.33; TW, 0.39; HL, 0.55; DPL, 0.18–0.19; PW, 0.27–0.28; MW, 0.32–0.34; AWV, 0.46; TL, 1.84–1.89.

**Material.** HOLOTYPE: ♂, ALLOTYPE: ♀, 1 ♀ PARATYPE of *Cotingacola dimorpha* ex *Procnias tricarunculata*, COSTA RICA. HOLOTYPE: ♂ of *C. acuticeps* ex *Pipreola aureopectus aureopectus*–probable error, COLOMBIA.

**Discussion.** This species with its narrow abdomen is closest to the foregoing 2 species. Its differences have already been discussed.

Our reason for suspecting an error in the host association of the single male of *C. acuticeps* with *Pipreola a. aureopectus* is that the same host specimen supplied the type series of *C. tergalis*. There is no evidence that cotingid individuals have more than a single species of *Cotingacola*, and we question this host association of a single distorted louse specimen.

#### *Cotingacola meridae* Carriker

(Figs. 18–21)

*Cotingacola meridae* Carriker, 1963: 31. Type host: *Pipreola riefferii melanolaema* (Sclater).

**Male and Female.** Head as in Fig. 19; HL/TW, 1.23–1.36. Abdomen relatively broad; TL/AWV, 3.39–4.12. Male terminalia much as in Fig. 20, genitalia (Fig. 21)

with prominent slender parallel-sided penis, 0.06–0.07 long, and other structures as shown. Female terminalia as in Fig. 18, subgenital plate with 26–32 marginal setae.

**Dimensions of Male.** POW, 0.34–0.37; TW, 0.38–0.43; HL, 0.50–0.53; DPL, 0.16–0.17; PW, 0.24–0.27; MW, 0.32–0.37; AWV, 0.43–0.51; TL, 1.56–1.76; GW, 0.11–0.12; GL, 0.35–0.38.

**Dimensions of Female.** POW, 0.38; TW, 0.42–0.43; HL, 0.54–0.56; DPL, 0.16–0.17; PW, 0.27–0.28; MW, 0.38–0.39; AWV, 0.50–0.57; TL, 1.98–2.06.

**Material.** HOLOTYPE: ♂, ALLOTYPE: ♀ of *Cotingacola meridae* ex *Pipreola riefferii melanolaema*, VENEZUELA. 4 ♂♂, 3 ♀♀ ex *Pipreola arcuata*, VENEZUELA.

**Discussion.** The male of *C. meridae* with its long penis (Fig. 21) is closest to that of *C. dimorpha* but is distinguished by its larger dimensions, broader abdomen, and much smaller HL/TW and TL/AWV values. The female with its large number of marginal subgenital plate setae is similar to *C. rupicolae* but is recognizable by its smaller size, narrower abdomen, and larger HL/TW and TL/AWV ratios.

The series of 7 lice from *P. arcuata* was erroneously identified by Carriker as *C. graciligastra*. This action by him was probably because a louse from this same host species was the type for *C. graciligastra*, a species that we have placed in synonymy with *C. tergalis* and that is markedly different from *C. meridae*.

#### *Cotingacola stotzi* Clayton and Price, new species (Figs. 22–25)

Type Host: *Querula purpurata* (P.L.S. Muller).

**Male and Female.** Head as in Fig. 24; HL/TW, 1.30–1.38. TL/AWV, 3.31–3.92. Male abdomen (Fig. 25) with tergite VIII having medioanterior indentation, genitalia (Fig. 22) with narrow parallel-sided penis 0.05 long, and other structures as shown. Female terminalia as in Fig. 23, subgenital plate with 11–15 marginal setae, lateral setae longer than median setae, each side with cluster of 5 or so medium setae lateroanterior to this marginal row.

**Dimensions of Male.** POW, 0.37–0.39; TW, 0.45–0.46; HL, 0.61–0.62; DPL, 0.19–0.20; PW, 0.32–0.33; MW, 0.44; AWV, 0.54–0.59; TL, 2.07–2.15; GW, 0.14–0.15; GL, 0.49–0.53.

**Dimensions of Female.** POW, 0.38–0.40; TW, 0.46–0.50; HL, 0.61–0.66; DPL, 0.19–0.21; PW, 0.32–0.35; MW, 0.44–0.49; AWV, 0.61–0.71; TL, 2.35–2.55.

**Type Material.** HOLOTYPE: ♂ ex *Querula purpurata*, PERU: Dept. Madre de Dios, Cerro de Pantiacolla, 600 m, 17 December 1985, D. H. Clayton. PARATYPES: 2 ♀♀ same data as holotype; 2 ♂♂, 8 ♀♀ same data except 1,030 m, above Rio Palotoa, 29 August 1985.

**Discussion.** This species is readily separated from all others of the genus by both sexes having the greatest head length and total length, the male having unique large genitalia (Fig. 22) and the female having a subgenital plate (Fig. 23) with longer lateral marginal setae and a cluster of setae lateroanterior to this row.

